

Leicester Partnership News

July / August 2009



Welcome to the July / August issue of Leicester Partnership News. This newsletter is for everyone, in every sector, who works in organisations and partnerships in Leicester to improve the city, its services and the quality of life for people who live here.

If you know anyone who you think would like a copy, please pass it on. And if you would like to be put on the mailing list for future issues get in touch – our contact details are at the end of the briefing.

We are interested in your news and views too – so do contact us if you have questions, comments or information to share. Tell us if this information is useful – or if there is anything else that you think it would be helpful to include in future. We look forward to hearing from you.

Community Cohesion work showcased

Leicester City Council's work on mainstreaming community cohesion is strongly featured in the latest Government guidance on cohesion.

Singled out for particular mention is the Council's Scrutiny Task Group's review of cohesion last year and the innovative way in which they asked fourteen service areas to explain how they were implementing cohesion into their services. The services include housing, community safety, youth services, regeneration, cultural services and schools along with libraries and neighbourhood management.

They also highlighted other aspects of Leicester's cohesion work such as member training on cohesion and related issues in Leicester – for example the re-emergence of the far right, the

PREVENT agenda, a senior manager's forum on cohesion and the council's work on the analysing the demographics of Leicester.

Continuing community involvement in cohesion is also mentioned in the report through the Community Cohesion Executive Group and the Community Cohesion Forum. These two bodies are ground-breaking ways through which the community shares in, and remains responsible for, cohesion in the city.

The Task Group's work in reviewing cohesion last year has resulted in a revised Community Cohesion Strategy and Delivery Plan and these will be coming before the Partnership in the next few months.

To read the report -

Go to <http://www.communities.gov.uk/publications/communities/mainstreamcommunitycohesion>

Contact

Trish Roberts-Thomson
Leicester Partnership Team
0116 252 7165
trish.roberts-thomson@leicester.gov.uk

Creating the environment for a thriving third sector in Leicester

The headline findings for Leicester from the National Survey of Third Sector Organisations, conducted by Ipsos MORI on behalf of the Office of the Third Sector are now available. The survey provides the basis for national indicator NI 7, which measures how much statutory organisations such as the council and the primary care trust etc. influence the success of third sector organisations (TSOs) in the city. The study found that the most important 'driver' of the degree to which TSOs perceive local statutory bodies influence their success, is their satisfaction with their ability to influence local decisions that affect them.

Leicester's baseline national indicator NI7 score was 19.6% compared the national average of 16.2%, while TSOs in Leicester were found to be more satisfied than the national average with their ability to influence local decisions, 20% compared to 16% nationally.

The overall results for each question in the survey for Leicester can be downloaded as well reports giving analysis on what the results mean for Leicester.

Go to <http://www.leicestercompact.org.uk/homepage/news>

Contact

Roy Roberts
Leicester Partnership Team
0116 252 6778
roy.roberts@leicester.gov.uk

Strengthening voluntary sector involvement in the Leicester Partnership

The city's voluntary and community sector (VCS) has a unique focus on working closely with communities in the city. So it's important that the partnership maximises their knowledge of local communities, skills in collaboration, and the potential to be partners in commissioning and in delivering solutions, programmes and services to help us all work together to tackle the challenges we face in the city.

Under its new Constitution, the Leicester Partnership has increased the number of seats for VCS representatives to 25. These places are divided into 14 for communities of interest representatives and 11 for neighbourhood representatives.

VCS communities of interest

The partnership has places for two representatives from each of seven communities of interest. We provide support to representatives from the Leicester Partnership Team and Voluntary Action Leicester. But the partnership also wants to help representatives to engage with the VCS groups they represent, so in the last year Philip Parkinson, the Chair of the Leicester Partnership has been working with a small task group to raise awareness of the partnership and its work in the VCS, and get the VCS themselves to choose 'host organisations' from the sector who will work on developing infrastructure and supporting the representatives.

Following ballots of VCS groups – the following host organisations have been selected -

VCS community of interest	Host organisation
Women's groups	LeicestHERday Trust
Disability groups	Leicestershire Centre for Integrated Living
BME groups	Leicester Race Equality Centre
Lesbian, gay, bisexual and transgender groups	LGBT Centre
Older people's groups	Age Concern
Faith and religion groups	Leicester Council of Faiths.
Youth groups	To be arranged as part of city council youth VCS infrastructure contract starting Oct. 2009.

The first job of the hosts will now be to identify the two representatives for their community of interest – and these representatives will be invited to the Leicester Partnership AGM meeting on 30th September.

VCS neighbourhood representatives

The Partnership also decided to allocate 11 places for VCS neighbourhood representatives, based on pairing up the 22 wards in the city into 11 pairs. The representatives will work with the ward community meetings in their area, and as with the VCS communities of interest places, the partnership wanted the VCS themselves to be involved in choosing the representatives.

To do this, a series of 11 meetings will be held for VCS groups whose work focuses in each of the areas to talk about the work of the partnership and to set up the process of selecting the representatives. Voluntary Action Leicester is working with the partnership team to carry out this work and will have a key role in supporting the representatives.

Contact

VCS communities of interest representatives

Cathy Carter

Leicester Partnership Team

0116 252 6719

cathy.carter@leicester.gov.uk

VCS neighbourhood representatives

Roy Roberts

Leicester Partnership Team

0116 252 6778

roy.roberts@leicester.gov.uk

Comprehensive Area Assessment

Work on Leicester's Comprehensive Area Assessment is now well underway, and is now focussing on areas of concern and potential excellence. Read more about progress so far by downloading the August CAA newsletter -

Go to <http://www.oneleicester.com/leicester-partnership/comprehensive-area-assessment>

Contact

Cathy Carter

Leicester Partnership Team

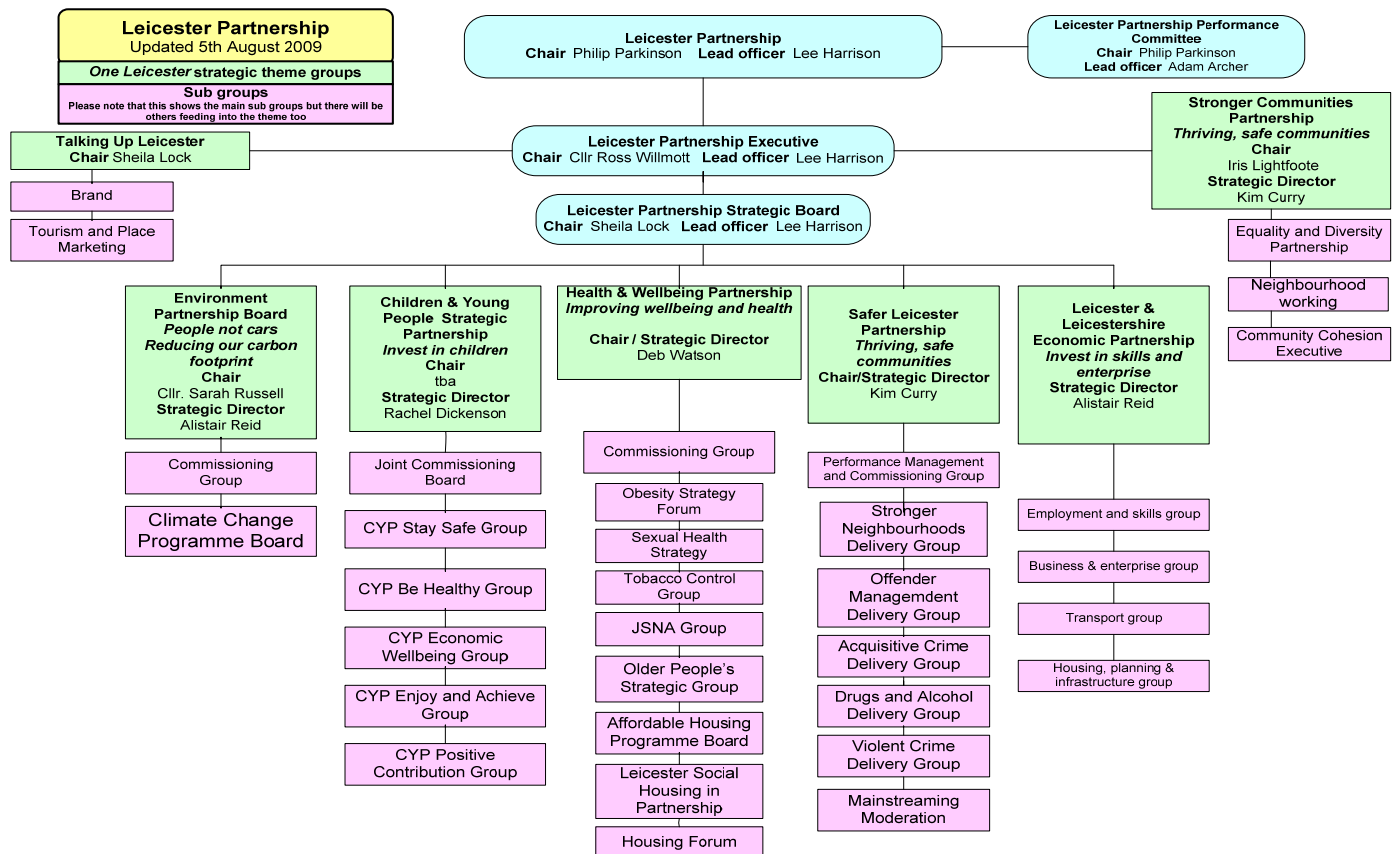
0116 252 6719

cathy.carter@leicester.gov.uk

Leicester Partnership strategic theme groups

The Partnership has seven strategic theme groups that feed into it and lead on each of the seven strategic priorities on the One Leicester 25 year vision.

They are shown in green on the diagram below and they carry out the detailed strategy development and commissioning of services for the city.



In this edition we are giving you more information on three of the strategic theme groups – and will feature others in future editions

Safer Leicester Partnership

Safer Leicester Partnership’s strategy for tackling crime and disorder in Leicester is called the Strategic Assessment. The assessment says that there are five crime and disorder priorities for the city -

Violent Crime

To reduce domestic violence, rape and sexual assault, racial violence and homophobic violence and the harm it causes, improve the night time economy and tackle guns, gangs and knives.

Contact Louise Lavelle 0116 252 8560

Acquisitive Crime

To reduce drug related acquisitive crime, (burglary, vehicle crime), the number of young people committing offences and harm caused by substance misuse among young people

Contact David Slade 0116 252 6031

Stronger Neighbourhoods

Anti-Social Behaviour is a city wide phenomenon, which has attracted a high political, and media profile. Building stronger neighbourhoods tackling anti-social behaviour has been a priority in the current partnership strategy and effective initiatives have emerged in response. This has led to partners learning to co-operate in new ways. This efficiently responds to hotspots and trends (places) and engages and involves victims to prevent and deter offenders.

Contact Nazira Vania 0116 252 8561

Reducing re-offending to reduce levels of adult re-offending Prolific and other Priority Offenders and violent offenders. This includes focussing on priority and prolific offenders and reducing re-offending by both adults and under 18s

Contact Sue Holden – 0116 252 8667

Alcohol & Drug Treatment

To reduce the harm caused by drugs and alcohol both to individuals and to communities

Areas of work include:

- Adults - raising awareness of drug treatment services
- Young people and drugs - Provide a response to problematic substance misuse
- Alcohol - Develop an alcohol harm reduction strategy

Contact Kate Galoppi 0116 252 6503

Go to <http://www.saferleicester.org/>

Contact

Daxa Pancholi

Head of Community Safety

Leicester City Council

0116 252 8634

daxa.pancholi@leicester.gov.uk

Stronger Communities Partnership

The Stronger Communities Partnership oversees the partnership's work on community engagement and empowerment, equality and diversity and community cohesion. It is responsible for managing three Local Area Agreement priority national indicators -

- NI 1 (% of people from different backgrounds who get on well together)
- NI 5 (satisfaction with local area)
- NI 140 (fair treatment by local services).

SCP has also produced -

- guidance on accessible written information in respect of the needs of disabled people.
- a strategy to embed equality and diversity within Leicester Partnership. This document
- considers the implications of current and forthcoming equality legislation
- an analysis Leicester Partnership's commissioning process, from the position of a "critical friend
- a 'clash calendar diary' which can be used to avoid scheduling meetings or events on dates that would clash with known and recognised religious or cultural festivals, national and international observances.

Contact

Carine Cardoza

Partnership Executive Team

0116 252 6089

carine.cardoza@leicester.gov.uk

Leicester and Leicestershire Economic Partnership

With a total population nearing one million, the Leicester and Leicestershire sub-region functions as an integrated economic area because of its commuting, retail and transport patterns. The global economic downturn has presented the area with new challenges and the local authorities have put into place new arrangements to deliver effective solutions together.

Leicester City Council and Leicestershire County Council and their respective Local Strategic Partnerships (the Leicester Partnership and the county's Leicestershire Together), have agreed to collaborate more closely to improve the sub-regional economy. Leicester and Leicestershire has become one of the few areas in the country that has signed a Multi-Area Agreement (MAA) with Government. The MAA has a clear focus on economic development and an emphasis on increasing employment, improving skills and stimulating business growth. A new joint governance structure, in the form of the Leadership Board, has been established to drive forward economic development in the sub-region. A Coordination Board reports to the leadership and they are both supported by a number of theme groups and shown on the diagram above. In addition, a new economic development company, Prospect Leicestershire, has been established to deliver economic growth.

In the last couple of months the coordination group has -

- agreed the commitment of a further £7.5m of regeneration schemes across the sub region;
- approved in principle a £12m bid to create 1,000 job opportunities for young people and the long term unemployed via the Future Jobs Fund;
- harmonised the approach to developing Multi Access centres in the city and the county;
- considered plans for a new approach to developing employment land and managed workspaces across the sub region; and
- commissioned the detailed economic assessment that will underpin the future economic regeneration strategy (first drafts now appearing);

And in terms more specific 'city regeneration' work they have -

- started to fast track the development of a new innovation workspace at the science park to be led by the City Council; and
- started to procure the roll out of the 'work Highcross' model across other occupational sectors using Working Neighbourhood Fund resources.

Go to <http://www.leicester.gov.uk/your-council--services/ep/regeneration/sub-regional-economic-partnership>

Contact

Mike Dalzell
Head of Regeneration
Leicester City Council
0116 252 6734

mike.dalzell@leicester.gov.uk

Recent Leicester Partnership meetings

The Leicester Partnership Executive met on 15th July and discussed –

- Total Place Project
- Working Neighbourhoods Fund
- Place Survey results
- LAA Annual Performance report
- Comprehensive Area Assessment
- National Indicator NI7 results (environment for a thriving third sector)

To read minutes and papers –

Go to <http://www.oneleicester.com/leicester-partnership/minutes-and-reports/lp-executive-15th-july-2009>

And the full Leicester Partnership met on the 24th June and discussed –

- Impact of the Recession in Leicester
- Comprehensive Area Assessment
- Financial inclusion
- Analysis of 2008 MORI Residents Survey by demographic groups

To read minutes and papers –

Go to <http://www.oneleicester.com/leicester-partnership/minutes-and-reports/leicester-partnership-24th-june-2009>

About the Leicester Partnership

Leicester Partnership is Leicester's 'local strategic partnership'. It has over 60 members drawn from the public, voluntary and community, and private sectors of the city. Our job is to bring these sectors together to drive forward a single vision and strategy for the city, and ensure that different services, programmes and initiatives work together effectively.

The Partnership provides the single over-arching local coordination framework within which other partnerships and organisations can operate.

Contact the Leicester Partnership Team

Phone 0116 252 6070

Email leicesterpartnership@leicester.gov.uk

Website <http://www.oneleicester.com/leicester-partnership>

Fax 0116 252 6716